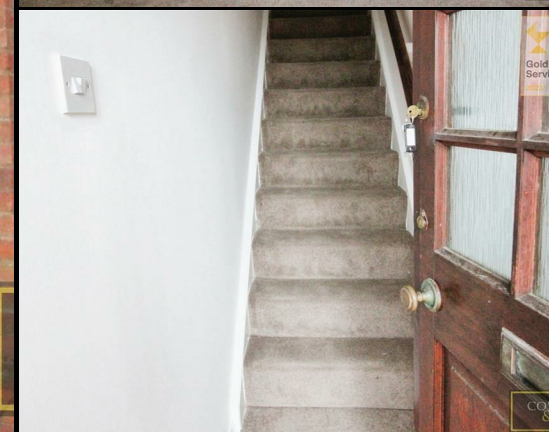


RESIDENTIAL SALES
LETTINGS & PROPERTY
MANAGEMENT

COWLING & PAYNE



Horkesley Way, Wickford
£895 PCM

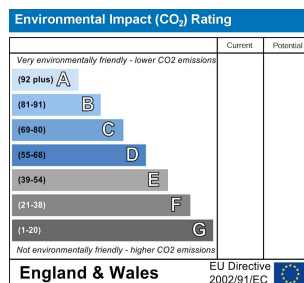
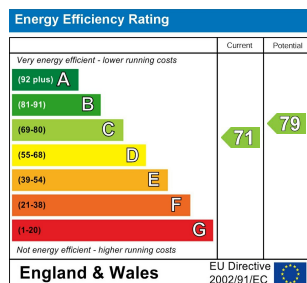
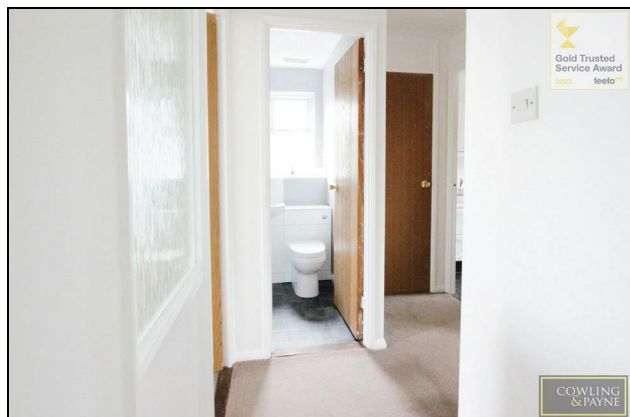
**** CPO9285 ONLINE ENQUIRIES ONLY**** WE ARE DELIGHTED TO OFFER, THIS ONE BEDROOM FIRST FLOOR APARTMENT, SITUATED ON THE POPULAR 'WICK MEADOWS' DEVELOPMENT.

THE PROPERTY AFFORDS A PRIVATE GROUND FLOOR ENTRANCE FRONT DOOR LEADING TO THE STAIRCASE AND LANDING.

THE PROPERTY BENEFITS FROM A GOOD-SIZED LIVING ROOM, DOUBLE BEDROOM, FITTED KITCHEN AND MODERN BATHROOM.

CONVENIENTLY LOCATED APPROXIMATELY 0.06 OF A MILE FROM WICKFORD'S TOWN CENTRE AMENITIES AND MAINLINE RAILWAY STATION.

AVAILABLE EARLY MARCH 2026 - COUNCIL TAX BAND 'B' - ENERGY PERFORMANCE RATING 'C'



RESIDENTIAL SALES
LETTINGS & PROPERTY
MANAGEMENT

COWLING
& PAYNE

You may download, store and use the material for your own personal use and research. You may not republish, retransmit, redistribute or otherwise make the material available to any party or make the same available on any website, online service or bulletin board of your own or of any other party or make the same available in hard copy or in any other media without the website owner's express prior written consent. The website owner's copyright must remain on all reproductions of material taken from this website.

2-4 Runwell Road, Wickford, Essex, SS11 7AB
Telephone: 01268 730707 | Fax: 01268 730737
info@cowlingandpayne.co.uk
www.cowlingandpayne.co.uk

